

# **KADCO USA**

*The Resource for Building & Maintaining Marine Environments*

- Dock Carts
- Dock Hardware
- Pile Hoops & Guides
- Dock Floats

- Mooring Products
- Anchoring Hardware
- Rub Rail & Bumper
- Truss Docks

**[www.kadcousa.com](http://www.kadcousa.com)**

**800-448-5503**



It is with great pleasure that we present to you Kadco USA's inaugural product catalog. After 20 years of servicing our customers with various brochures, we have combined them into one resource. We continue our original mission of manufacturing the finest carts for marine environments. In addition we have developed a line of dock products. These products use the same core principles of quality, longevity, and serviceability that our customers have demanded over the years. We hope these products will meet your exacting standards and you use this catalog as a resource to locate the finest products for your waterfront environment.

## Contact Us:

Kadco USA Inc.  
P.O. Box 584  
Amsterdam, NY 12010  
Phone: 518-661-6068  
Fax: 518-661-5808  
Email: [info@kadcousa.com](mailto:info@kadcousa.com)  
[www.kadcousa.com](http://www.kadcousa.com)

## Offices and Showroom:

Kadco USA Inc.  
17 W Main St  
Mayfield, NY 12117

Hours:  
Mon-Fri 9 - 5:30  
Sat 10 - 2 (Summer)

## Shipping Locations:

Mayfield, NY 12117 - Full Product Line  
Kent, WA 98032 - Dock Hardware, Carts, Dock Floats  
Falmouth, VA 22405 - Dock Floats  
Conyers, GA 30012 - Dock Floats  
Whiteland, IN 46184 - Dock Floats  
Sallisaw, OK 74955 - Dock Floats  
Orlando, FL 32837 - Dock Floats  
Osage Beach, MO 65065 - Dock Floats



### Ordering Information

Phone: 800-448-5503  
Fax: 518-661-5808  
Online: [www.kadcousa.com](http://www.kadcousa.com)

### Payment Options

We accept VISA, MasterCard, Discover and American Express. Terms are net 30 days for approved accounts. We accept municipal and government purchase orders. All currencies must be in U.S. dollars.

### Shipping

We ship most orders received by 2 pm EST the same day. Orders ship via UPS or common truck carrier. We will inform you of the carrier and tracking information at time of shipment. All damage claims must be reported within 10 business days and noted on the delivery receipt. Any claims thereafter may not be honored.

### Returns & Exchanges

All returns must be labeled with a return merchandise authorization number, or RMA. An RMA can be attained by calling us. We reserve the right to charge a restocking fee. No parcels accepted freight collect.

### Custom Fabrication

Can't find the hardware you need? Have an item that is a little different? We have a complete facility that can weld, punch, bend, machine, galvanize or cut your part.

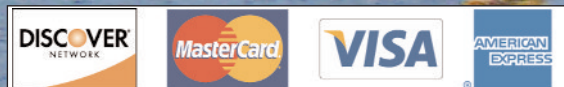
### Contents

Carts	4-5
Dock Hardware	6-9
Pile Hoops & Guides	10-11
Dock Floats	12-13
Bumpers & Wheels	14
Rub Rail	15
Gangways & Docks	16
Dock Kits	17
Dock Boxes	18
Buoys	19
Mooring Whips	20
Index	23

### Technical Information

Our knowledgeable staff can provide information on every product in this catalog. Please call our toll free number with any questions you have.

### *Full Product Index on Page 23*



### Design Information

We offer design services for your dock or marina project. We have a library of complementary CAD drawings or can provide custom drawings for your specific needs. Call us for more details.

## Model 200-P

This is our original Carry-It dock cart that has been shipped all over the world. It features large 20" plastic poly-wheels with ball bearings, zinc-coated hardware and a rugged plastic tub.

Weight Capacity:	300 lbs., 50 Gallons, 7 cu.ft.
Axle Construction:	Zinc Coated 5/8" Threaded Axle
Weight:	42 lbs.
Wheel Construction:	Plastic Rim with Poly Tire
Cart Dimensions:	Height 24", Width 32", Length 58"
Tub Dimensions:	Height 12", Width 24", Length 44"



## Model 200-PR

The 200-PR cart has all of the features of our original 200-P cart with the addition of a replaceable urethane tire. This flat-free urethane tire rides quietly on wood and aluminum docks.

Weight Capacity:	300 lbs., 50 Gallons, 7 cu. ft.
Axle Construction:	Zinc Coated 5/8" Threaded Axle
Weight:	37 lbs.
Wheel Construction:	Plastic Rim with Urethane Tire
Cart Dimensions:	Height 24", Width 32", Length 58"
Tub Dimensions:	Height 12", Width 24", Length 44"



## Model 200-X

The 200-X cart is our toughest cart with a plastic rim. The black rim doesn't fatigue in the hot sun and is equipped with a replaceable flat free urethane tire. This heavy duty wheel package has proven its durability in harsh conditions.

Weight Capacity:	400 lbs., 50 Gallons, 7 cu. ft.
Axle Construction:	Zinc Coated 5/8" Threaded Axle
Weight:	37 lbs.
Wheel Construction:	H.D. Plastic Rim with Urethane Tire
Cart Dimensions:	Height 24", Width 32", Length 58"
Tub Dimensions:	Height 12", Width 24", Length 44"





**Model 200-TR**

This is our bullet-proof marine mechanics' cart. The cart has a 500 lb. capacity and flat free urethane tires on wide 18" wheels. It is the cart for marine contractors and mechanics to use and abuse.



Weight Capacity:	500 lbs., 50 Gallons, 7 cu. ft.
Axle Construction:	Zinc Coated 3/4" Threaded Axle
Weight:	42 lbs.
Wheel Construction:	Steel Rim with Urethane Tire
Cart Dimensions:	Height 24", Width 32", Length 58"
Tub Dimensions:	Height 12", Width 24", Length 44"

**CARRY-IT™**

## ***Why have marinas been buying Dock Carts from Kadco USA for 20 years?***

**Made For Marine Environments**

Our dock carts use materials that are designed to withstand the elements in marine environments. Buy a cart that is designed for a marina, not a garden.

**Full Parts Availability**

Why discard a cart when a minor part breaks? Every cart part can be ordered individually. Make an investment in a cart that will be serviceable for the life of your marina.

**Zinc Coated Hardware and Frame for Rust Prevention**

The axle and hardware are zinc plated for protection from rust. The frame on a Kadco USA cart is made from steel. This is not ordinary galvanized steel; we use Allied brand Zinc Flo-coat tubing. This tubing is coated with zinc at the factory as it is being roll-formed. The tubing is then given a clear coat for added corrosion resistance and finish.

**Threaded Axles with a Lock Nut**

Our axles are made from high carbon steel with threads on them. We provide a lock nut to ensure the wheels on your cart stay there. Other manufacturers use cotter pins which eventually rust through, causing bearing damage or the loss of a wheel.

**High Grade Polyethylene Tub**

Want a cart that will last a lifetime? Buy one made from materials that are designed to last that lifetime. The fact is that wood rots, steel rusts, and fiberglass cracks. We carefully selected all the materials in our cart. We use polyethylene because it does not rust or rot and it has enough flexibility to prevent cracking when someone drops hard objects on it. The plastic tub of the Kadco USA cart has ribbed sides and bottom for extra strength. The raised lip at the end of the tub is designed to prevent large objects from sliding off your cart.

**Lightweight and Well Balanced**

You made the smart choice when choosing a cart over a wheelbarrow. A cart is designed to distribute the load to the cart not to your arms. Don't defeat this advantage by purchasing a heavy cart. Our cart weighs 42 lbs; it is lightweight when compared to wooden, steel, or fiberglass carts. The axle is well positioned so that you are pushing the cart, not carrying the load.

**Holds Liquids**

You'll find more uses for your dock cart knowing that it can haul up to 50 gallons of liquid.

**Made in America**

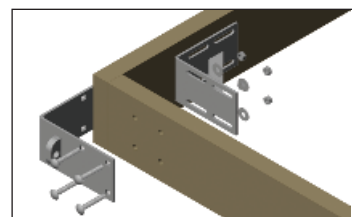
Buy with confidence knowing that our cart is made in the USA with US workers and components.





- **Hot Dipped Galvanized**
- **High Strength 1/4" Steel Base Plates**
- **Heavy Duty 1/2" Male and 3/4" Female Connecting Tabs**
- **Designed for 1/2" Carriage Bolts and 3/4" Connecting Pins**
- **Made in the USA!**

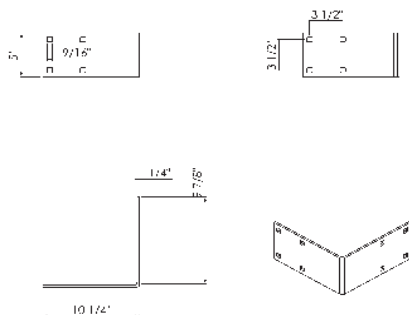
## Corner Supports



Corner Assembly

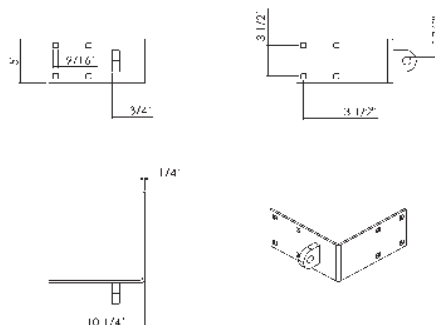
### Outside Corner

Used at the end of dock sections and on the corners of swim platforms **25-OC 7 lbs.**



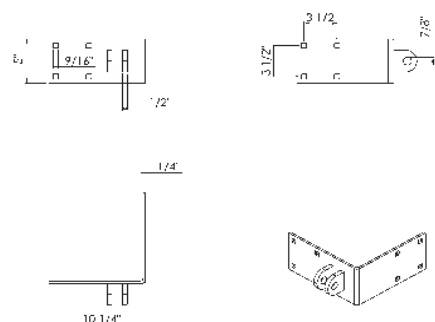
### Outside Corner Male

Used at the end a of dock section to connect to another section **25-OCM 8 lbs.**



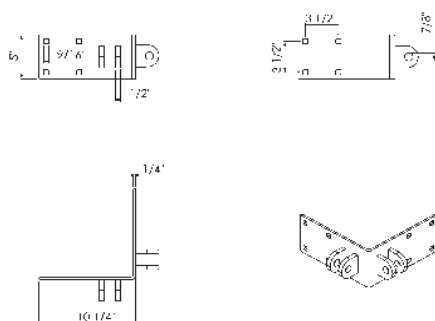
### Outside Corner Female

Used at the end of a dock section to connect to another section **25-OCF 8.5 lbs.**



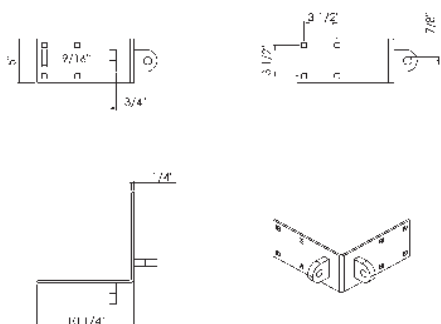
### Outside Corner Female Female

Used to connect sections on both sides of the corner **25-OCFF 11 lbs.**



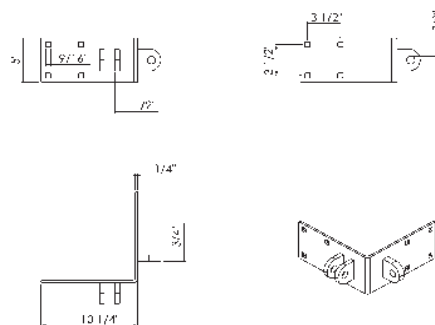
### Outside Corner Male Male

Used to connect sections on both sides of the corner **25-OCMM 10 lbs.**



### Outside Corner Female Male

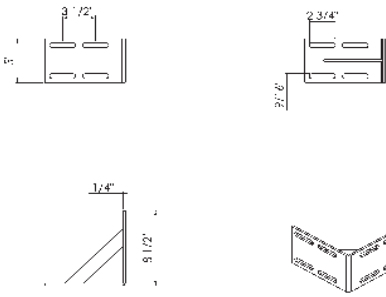
Used to connect sections on both sides of the corner **25-OCFM 10.5 lbs.**





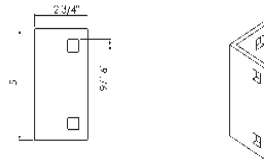
### Inside Corner

Used on the inside of the corner to give lateral strength  
**25-ICG 7 lbs.**



### Angle Bracket

Used to reinforce internal framework (stringers)  
**25-AB 2 lbs.**



### Single Backing Plate

Used with an Angle Bracket to reinforce internal frame-  
work (stringers) **25-SBP 1 lb.**

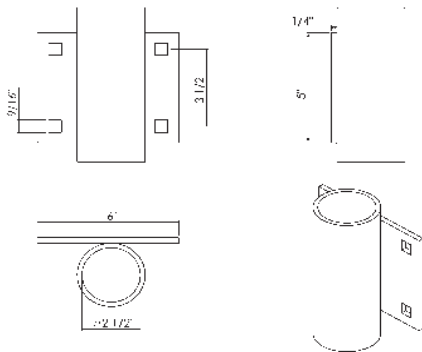


## Pipe Holders

- **Heavy Duty Schedule 40 Pipe**
- **1/4\"**
- **Hot Dipped Galvanized**

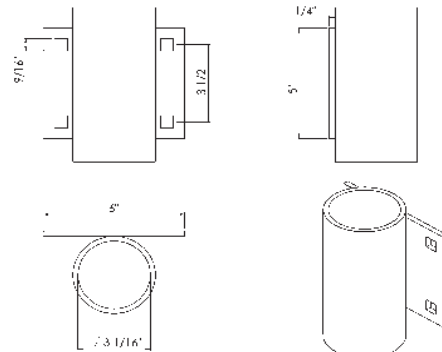
### Flat Pipe Holder 2.5\"

Used to connect a floating dock to driven pipes  
**25-FPH-25 6 lbs.**



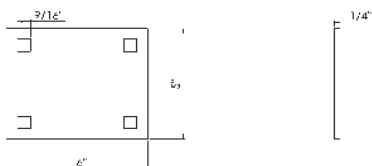
### Flat Pipe Holder 3\"

Used to connect a floating dock to driven pipes  
**25-FPH-3 8 lbs.**



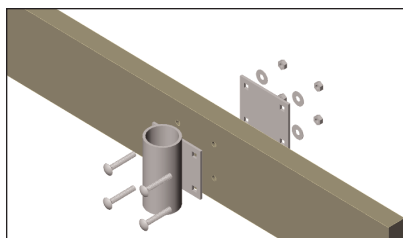
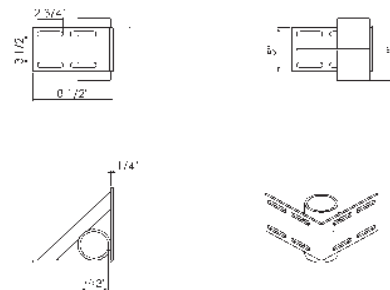
### Flat Pipe Holder Backing Plate

Used as a backing plate for our Flat Pipe Holder  
**25-FPHBP 2 lbs.**



### Inside Corner Pipe Holder 2.5\" or 3\"

Used on the inside of a corner to give lateral strength  
**25-ICPH-3 (Shown Below) 12 lbs.**  
**25-ICPH-2.5 (ID of Pipe 2.5\") 11 lbs.**



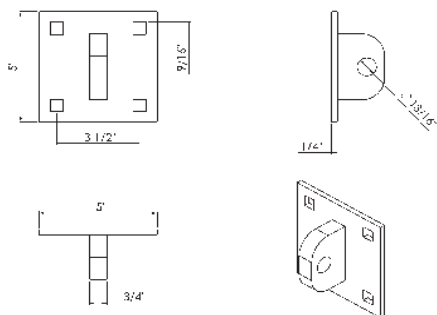
**Pipe Holder Assembly**



## Connecting Brackets

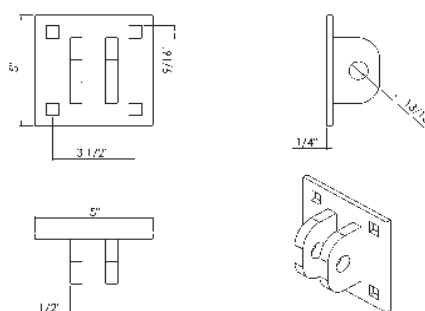
### Double Plate Male

Used with a Double Plate Female to connect dock sections together **25-DPM 3 lbs.**



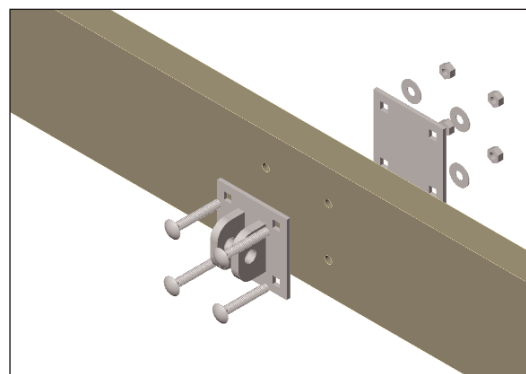
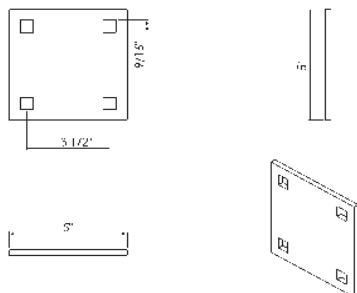
### Double Plate Female

Used with a Double Plate Male to connect dock sections together **25-DPF 4 lbs.**



### Double Backing Plate

Used with our Connecting Brackets (above) **25-DBP 2 lbs.**

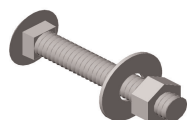


Connecting Bracket Assembly

## Fasteners

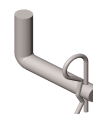
*We stock a full line of Stainless Fasteners. Call us for details!*

**Galvanized Carriage Bolt Assembly**  
Bolt, Washer & Nut

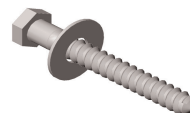


Size	Part #
1/2" x 3"	CB-123
1/2" x 3-1/2"	CB-1235
1/2" x 4"	CB-124
1/2" x 4-1/2"	CB-1245
1/2" x 5"	CB-125
1/2" x 6"	CB-126
1/2" x 7"	CB-127
1/2" x 8"	CB-128

**Galvanized Connecting Pin** - Used to connect sections. Clip included. **25-CP**



**Galvanized Lag Bolt Assembly**  
Bolt & Washer



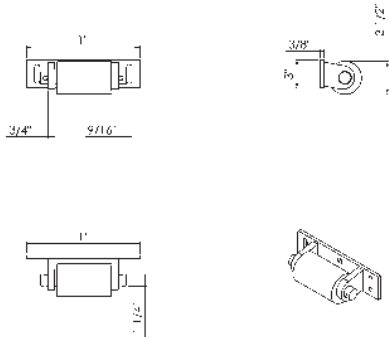
Size	Part #
3/8" x 2	LB-382
3/8" x 3	LB-383
3/8" x 4"	LB-384
1/2" x 4"	LB-124



# Special Hardware

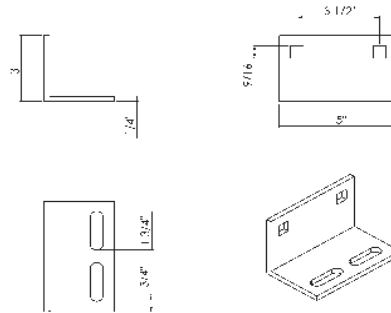
## Roller Assembly

Used on the bottom of ramps to prevent wear on the decking **25-RA 12 lbs.**



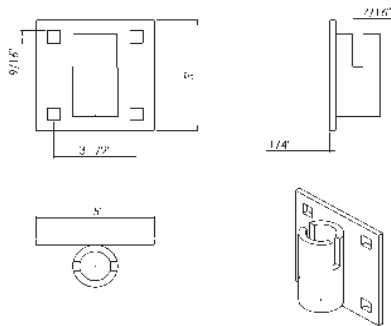
## Cleat Support

Used for additional bracing of a cleat **25-CS 2lbs.**



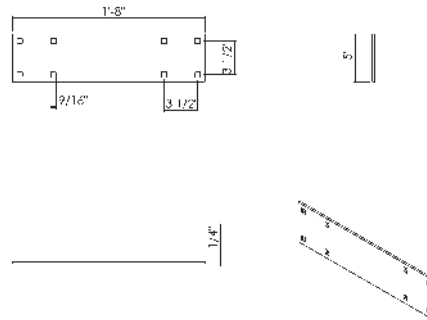
## Chain Retainer

Used to attach to anchor chain (5/16" or 3/8") **25-CR 5 lbs.**



## Joining Plate

Used to splice boards or sections **25-JP 8 lbs.**



# Piling Caps

These piling caps protect the inside of wooden pilings from rot and discourage birds from sitting on top of your pilings. Made from heavy duty polypropylene. Available in white and black.

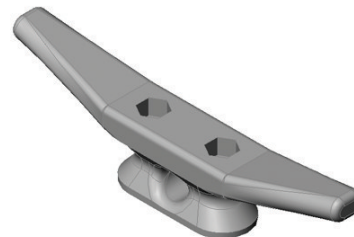
Part #	Color	Size	Part #	Color	Size
6200	White	7"	6200	Black	7"
6201	White	8"	6201	Black	8"
6202	White	9"	6202	Black	9"
6203	White	10"	6203	Black	10"
6204	White	11"	6204	Black	11"



# Galvanized Cleats

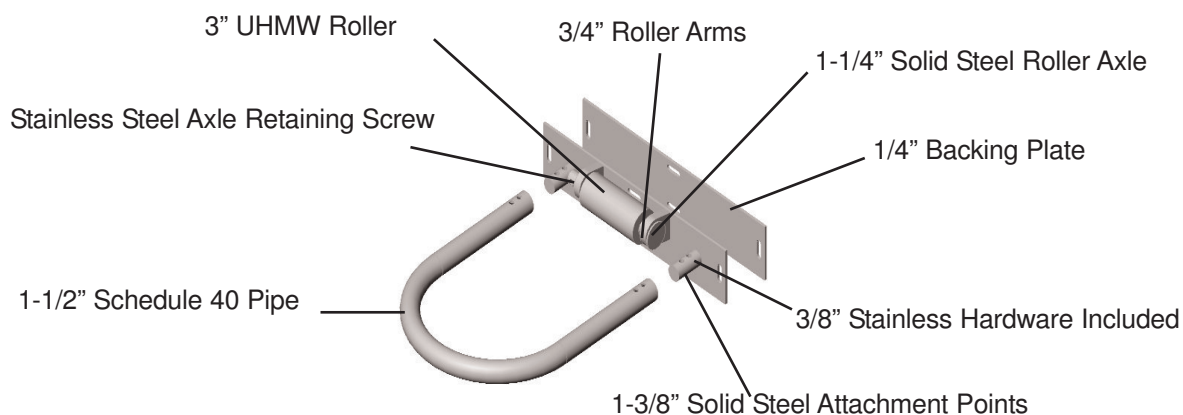
Our Hex Head Galvanized Cleats are perfect for tying off your boat. Available in 8" and 10".

Part #	Size
HCG-8	8"
HCG-10	10"



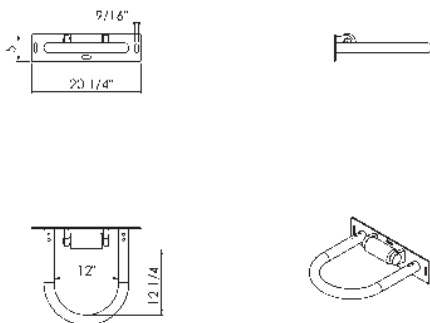
## Flat Pile Hoops

### Anatomy of a Kadco USA Pile Hoop



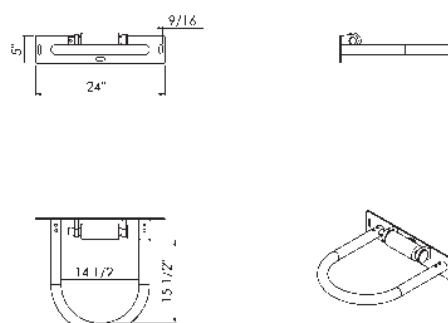
#### Flat Pile Hoop 12"

Used for connecting floating docks to pilings  
PH-12R 40 lbs.



#### Flat Pile Hoop 14"

Used for connecting floating docks to pilings  
PH-14R 43 lbs.

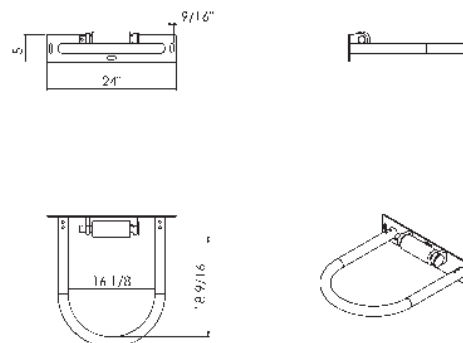


### We Make it Better!

- **Hot Dipped Galvanized**
- **Stronger Attachment Points**
- **Backing Plate Included**
- **Stainless Hardware**
- **Heavy Duty Roller & Axle**

#### Flat Pile Hoop 16"

Used for connecting floating docks to pilings  
PH-16R 45 lbs.

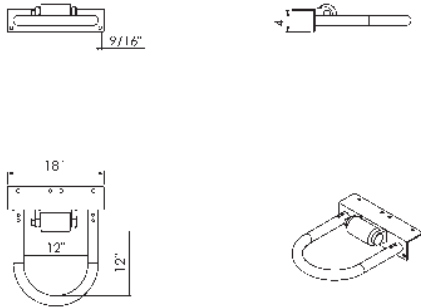




## Angle Pile Hoops

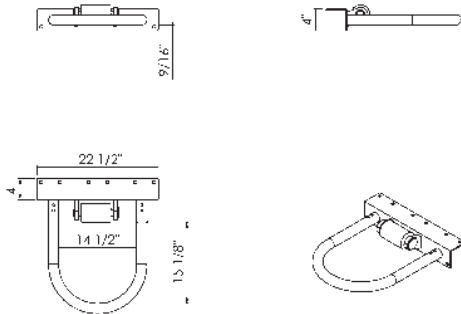
### Angle Pile Hoop 12"

Used for connecting floating docks to pilings  
APH-12R 38 lbs.



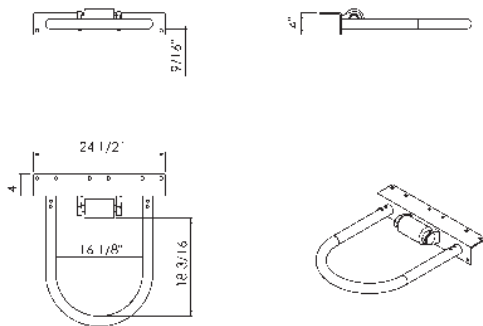
### Angle Pile Hoop 14"

Used for connecting floating docks to pilings  
APH-14R 42 lbs.



### Angle Pile Hoop 16"

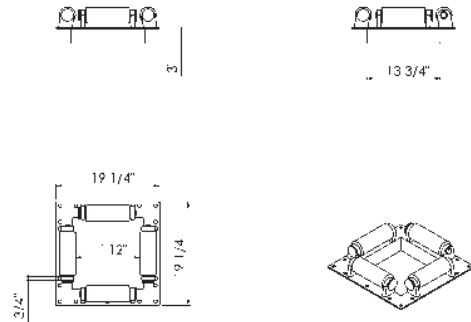
Used for connecting floating docks to pilings  
APH-16R 43 lbs.



## Square Pile Guides

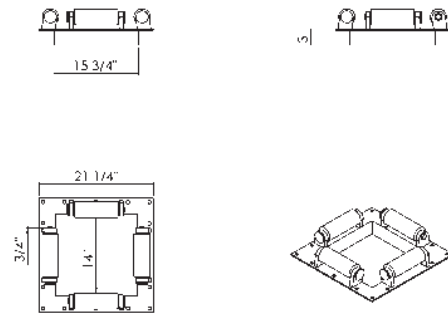
### Square Pile Guide 12"

Used for connecting floating docks to pilings  
SPG-12 79 lbs.



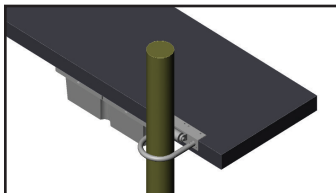
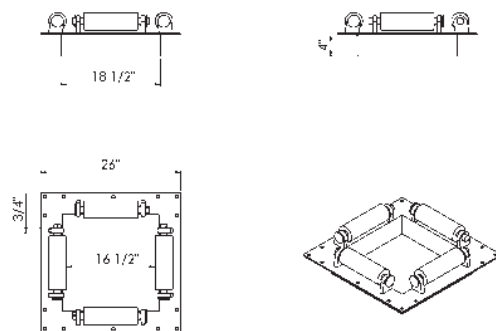
### Square Pile Guide 14"

Used for connecting floating docks to pilings  
SPG-14 90 lbs.

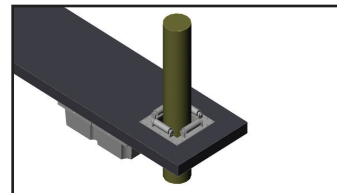


### Square Pile Guide 16"

Used for connecting floating docks to pilings  
SPG-16 95 lbs.



**Need A  
Different Size?  
Call Us!**



## Dock Floats

- Rotationally Molded Shell - No Seams that Crack
- EPS Foam Filled
- Ribbing for Added Strength and Durability
- Meets Army Corps of Engineers Specs
- Thick Mounting Slots and Flanges for Easy Installation
- 12 Year Warranty
- Made in the USA



### 24 x 36 Floats

Part #	Size (in.)	Weight (lb.)	Buoyancy
2436-12	24 x 36 x 12	27	355
2436-16	24 x 36 x 16	31	440

**New Sizes for 2008**

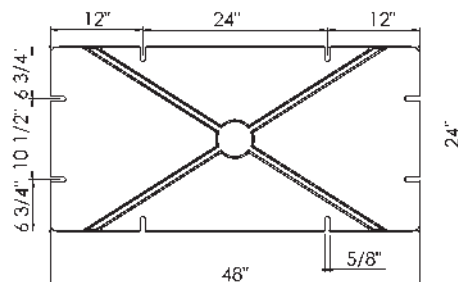
**24 x 36 Series**

**20 x 72 x 8 Rowing Floats**

**Call for More Details!**

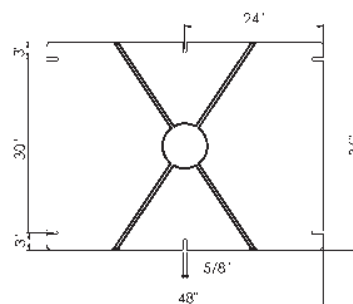
### 24 x 48 Floats

Part #	Size (in.)	Weight (lb.)	Buoyancy
2448-12	24 x 48 x 12	30	450
2448-16	24 x 48 x 16	36	604
2448-20	24 x 48 x 20	41	759



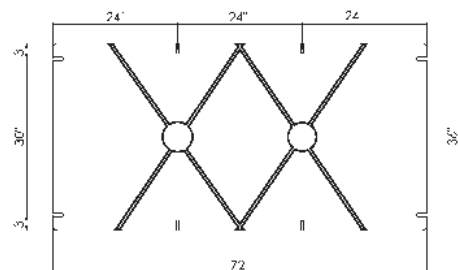
### 36 x 48 Floats

Part #	Size (in.)	Weight (lb.)	Buoyancy
3648-12	36 x 48 x 12	41	679
3648-16	36 x 48 x 16	49	911
3648-20	36 x 48 x 20	57	1143
3648-24	36 x 48 x 24	68	1372



### 36 x 72 Floats

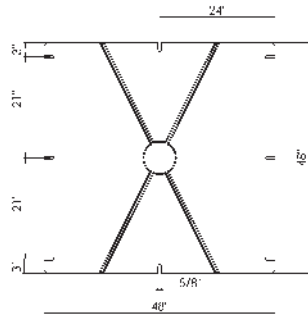
Part #	Size (in.)	Weight (lb.)	Buoyancy
3672-12	36 x 72 x 12	50	1050
3672-16	36 x 72 x 16	67	1373
3672-20	36 x 72 x 20	94	1716
3672-24	36 x 72 x 24	101	2000





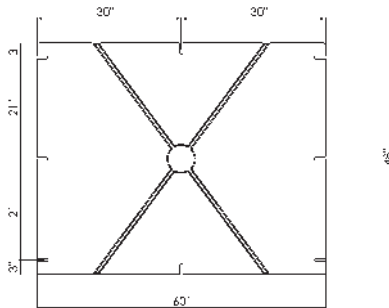
**We ship floats from 8 different warehouses. Call us for the most economical freight rate or your closest pick-up location!**

## 48 x 48 Floats



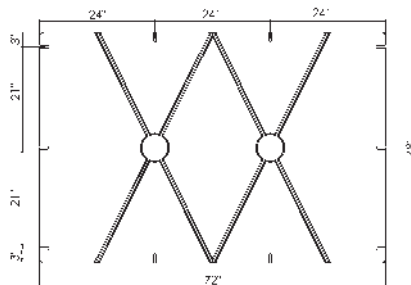
Part #	Size (in.)	Weight (lb.)	Buoyancy
4848-12	48 x 48 x 12	52	908
4848-16	48 x 48 x 16	63	1217
4848-20	48 x 48 x 20	74	1526
4848-24	48 x 48 x 24	89	1831

## 48 x 60 Floats



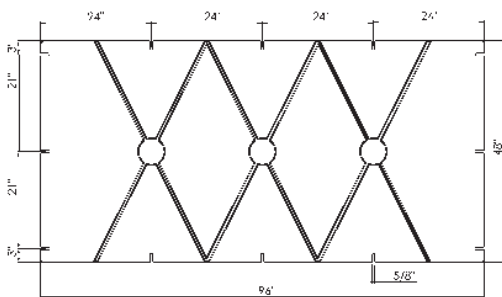
Part #	Size (in.)	Weight (lb.)	Buoyancy
4860-12	48 x 60 x 12	70	1165
4860-16	48 x 60 x 16	84	1555

## 48 x 72 Floats



Part #	Size (in.)	Weight (lb.)	Buoyancy
4872-12	48 x 72 x 12	78	1362
4872-16	48 x 72 x 16	92	1828
4872-20	48 x 72 x 20	105	2295
4872-24	48 x 72 x 24	126	2754
4872-32	48 x 72 x 32	164	3680

## 48 x 96 Floats



Part #	Size (in.)	Weight (lb.)	Buoyancy
4896-12	48 x 96 x 12	104	1816
4896-16	48 x 96 x 16	122	2278
4896-20	48 x 96 x 20	143	3057
4896-24	48 x 96 x 24	172	3668
4896-32	48 x 96 x 32	195	4754

# Heavy Duty Dock Wheels

The Kadco USA Dock Wheel is made from non-marring molded polyurethane. This material provides the best protection for docking in heavy winds and current. All mounting hardware is made from 1/4" galvanized steel. Choose a corner or side mounted application.



10" Dock Wheel



Mounting Brackets



14" Dock Wheel

## Kadco USA Dock Wheels

Description	Part #
10" Dock Wheel Corner Mount	DW-10CM
10" Dock Wheel Outside Corner	DW-10OC
10" Dock Wheel Side Mount	DW-10SM
14" Dock Wheel Corner Mount	DW-14CM
14" Dock Wheel Outside Corner	DW-14OC
14" Dock Wheel Side Mount	DW-14SM

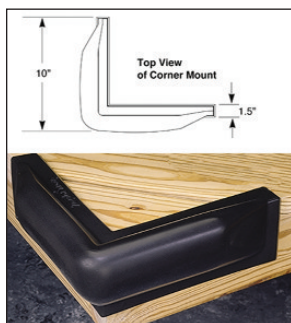
## Taylor Made - Dock Pro Inflatable Dock Wheel

Inflatable wheel features mold-in valves to adjust the level of firmness. Hot dipped galvanized universal bracket available in corner or straight mount. 9", 12" and 18".



Part #	Description	Part #	Description
DW-TM9C	9" Corner	DW-TM9S	9" Straight
DW-TM12C	12" Corner	DW-TM12S	12" Straight
DW-TM18C	18" Corner	DW-TM18S	18" Straight

# Dock Bumpers



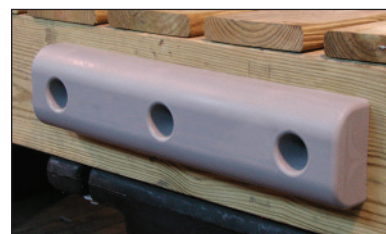
## Taylor Made Vinyl Corner Bumper

This molded vinyl bumper measures 10"x10". An integrated air chamber protects the side and top of dock. Bumper protrudes 1-1/4" above dock level for added protection.

**RR-DCW**      **White**  
**RR-DCB**      **Black**

## 4" x 18" Urethane Dock Bumper

These thick commercial duty urethane bumpers provide superior protection for your boat and wood dock. Stainless steel molded inserts guarantee a secure attachment. Stainless steel lag screws are included in order.



**DB-418 4" x 18"**



## Taylor Made Corner Bumper

Molded PVC corner has structural ribbing to provide improved impact protection. 90 degree end matches up with our heavy duty Rub-Rail. Measures 6" x 6".

**RR-HDDCW**      **White**  
**RR-HDDCB**      **Black**

## Post Bumpers

Vinyl bumpers are designed for use on pipe-supported docks. Fits over 1-1/2" pipe and features an inflation valve to adjust its firmness. Post bumpers fit easily over our Flat Pipe Holders which can be seen on Page 7. Protect your boat and dock!

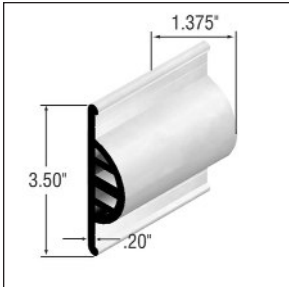
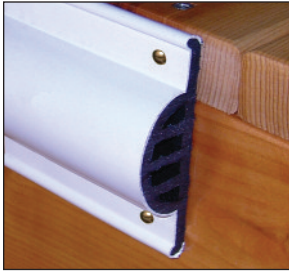
**RR-PB**



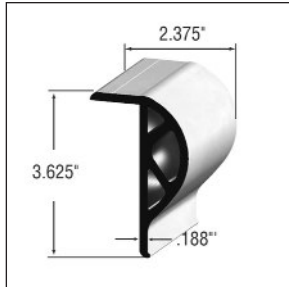


## Vinyl Rub Rail

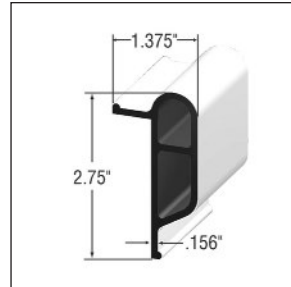
These PVC Rub Rail profiles are designed to add protection to your dock. Available in White or Black and sold in 10' lengths. Add our Corner Bumper on the previous page for maximum protection.



**Heavy Duty C Shape**  
**RR-HDC 10' Length**



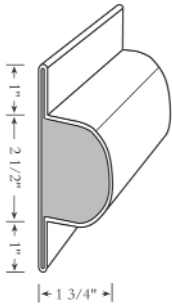
**Heavy Duty P Shape**  
**RR-HDPL 10' Length**



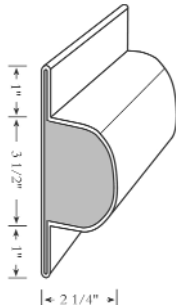
**Standard Duty P Shape**  
**RR-EP 10' Length**

## Perimeter Industries - Dock Edging

This polyester edging with a foam inner cushion is the choice of many high end dock builders. It is available in up to 50' lengths and flexible enough to mount on curves or around corners.



**4-1/2" W x 1-3/4" D**



**5-3/4" W x 2-1/4" D**

- Will not deteriorate in the sun or mar boat
- Polyester textile cover and closed cell foam inner cushion, not vinyl, PVC or rubber
- Cleans easily with liquid soap and a vinyl brush
- Flexible tab system allows for top of dock or fold over mounting which conceals top fasteners (see picture)
- Male/Female connections available with volume orders
- Mount vertically on exposed pilings or horizontally on dock edges
- Custom sizes available to 50'



Part #	Length
DB3.30	3'
DB3.40	4'
DB3.60	6'
DB3.90	9'
DB3.CU25	25'
DB3.CU50	50'

Part #	Length
DB4.30	3'
DB4.40	4'
DB4.60	6'
DB4.90	9'
DB4.CU25	25'
DB4.CU50	50'

Fold Over Installation



Top Mounted Installation



**Looking for more Perimeter Industries Products? Call Us!**

**www.kadcousa.com**

**800-448-5503**

## Aluminum Gangways

Kadco USA manufactures aluminum gangways built from 6061-T6 marine grade aluminum. Choose from aluminum, wood or composite decking. We offer hinges, transition plates and UHMW roller systems built to meet your site's specific challenges. Call for non-standard size requirements.

### Standard Sizes

Part #	Gangway Size
GW-315	3' W x 15' L
GW-320	3' W x 20' L
GW-325	3' W x 25' L
GW-415	4' W x 15' L
GW-420	4' W x 20' L
GW-425	4' W x 25' L

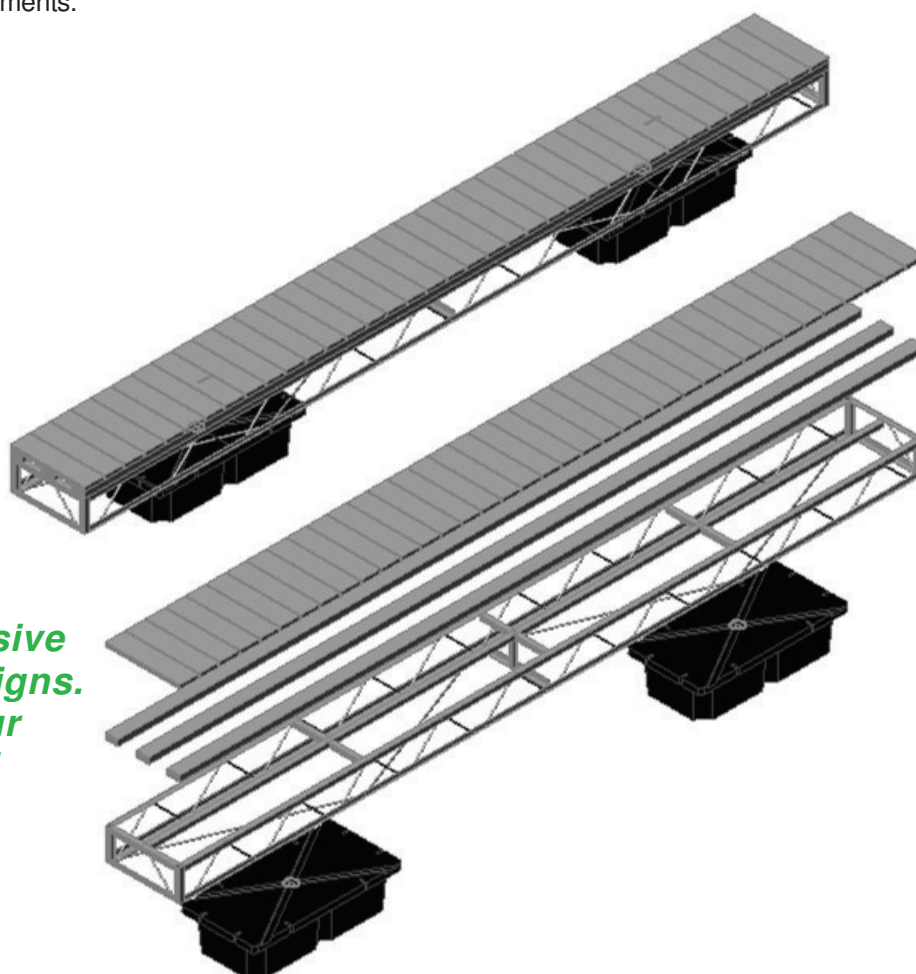


## Galvanized Truss Docks

Our galvanized truss docks are made from 1-1/2" x 1-1/2" x 3/16" structural angle and 5/8" round steel. They are welded and then galvanized to ASTM standards to ensure a long lasting structure. The frames are prepunched to allow endless configurations and slip spacing. Truss docks can be ordered as a frame only or a complete system. Call with your dock requirements.

### Standard Sizes

Part #	Frame Size
TD-310	3' W x 10' L
TD-410	4' W x 10' L
TD-610	6' W x 10' L
TD-810	8' W x 10' L
TD-420	4' W x 20' L
TD-620	6' W x 20' L
TD-820	8' W x 20' L

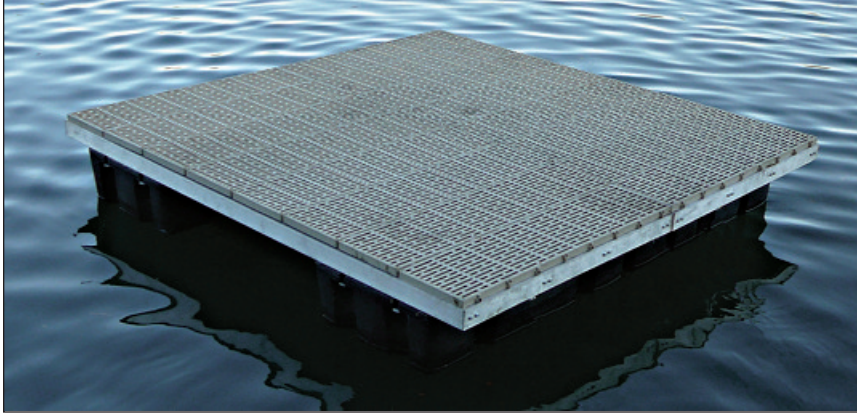


*We have an extensive library of dock designs. Call us with your specifications!*



## Aluminum Swim Float Kit

Kadco USA's 8' x 8' swim platform is constructed using the best long lasting components. The frame is made from 6061-T6 marine grade aluminum. The Thruflow decking is lightweight, UV resistant and has an anti-slip surface. We use 4 of our 2448-12 floats which are rated at 1800 lbs. of buoyancy. This item ships UPS and can be assembled in less than an hour.



SF-88 Swim Platform

- **6061-T6 marine grade aluminum frame**
- **Stainless steel hardware**
- **Thruflow decking**
- **4 foam filled dock floats**
- **1800 lbs. of buoyancy**
- **Pre-punched keyhole for easy anchoring**
- **Ships UPS!**

## Work Platform Kit

Our work platform has the same great features and construction as our swim platform (shown above) in a smaller 4' x 8' package.

**SF-48**

**See More Pictures  
On Our Website  
[www.kadcousa.com](http://www.kadcousa.com)**

## Dock Ladders

Constructed from 6063-T5 marine grade aluminum. These ladders have a 500 lb. capacity. Available in 4 styles and 3,4,5,6 or 7 step configuration.

Stationary Ladder - Straight ladder for pier or dock **SL 3-7**

Lift Ladder - Retractable ladder which lifts out of the water. **LL 3-7**

Swing Ladder - Ladder swings completely out of water on hinge. **SWL 3-7**

Floating Dock Ladder - Ladder lifts out of the water and allows for more dock room. **FDL 3-7**



## Thruflow Decking Panels

Thruflow decking panels are designed with polypropylene and fiberglass filler for maximum strength and light weight. They have an anti-skid surface which doesn't heat up like other decking surfaces. Standard panel is 48" x 12". Other sizes available. **TF-48TAN**



### Thruflow Benefits:

- Anti Slip Surface
- Resistant to rot and insects
- 30 year residential warranty; 15 year commercial warranty
- Approved by the U.S. Army Corps of Engineers in applications over Johnson Sea Grass and Mangrove Habitat.
- Pre-molded mounting holes
- Engineered to provide a cool walking surface even in direct sun and very hot ambient temperatures
- Totally maintenance free
- 135 lb/sq.ft. Load Rating
- Light Weight 1.35 lb/sq. ft.
- Interlocking for easy installation

## Taylor Made Fiberglass Dock Boxes

These fiberglass dock boxes are built better than any other dock box we have seen. Taylor Made's closed mold manufacturing process produces a dock box which has a consistent wall thickness and unique smooth interior. Other manufacturers use a standard layering technique which produces thin areas and rough interior finish which can be sharp. Choose from 10 different sizes.

### Standard Dock Boxes

Part #	Description	Size
83562	Small	24"H x 54"W x 22"D
83552	Medium	24"H x 72"W x 23"D
83551	Large	24"H x 85"W x 22"D
83553	Deep Small	27"H x 46"W x 26"D
83554	Deep Medium	27"H x 72"W x 26"D

### Low Profile Dock Boxes

Part #	Description	Size
83550	Small	20"H x 40"W x 19"D
83557	Medium	18"H x 48"W x 20"D

### Top Seat Dock Boxes

Part #	Description	Size
83556	Small	27"H x 46"W x 26"D
83555	Large	29"H x 72"W x 29"D

### Triangle Dock Box

Part #	Description	Size
83561	Triangle	27"H x 54"W x 33"D

- **UV gelcoat finish**
- **Stainless steel hardware**
- **Lockable latch**
- **Gas shocks for lifting the lid**
- **Solid wood core**
- **Smooth interior is easy to clean**



**Gas Shocks  
Standard**



**Stainless Steel  
Lockable Latch**



**Standard Series**

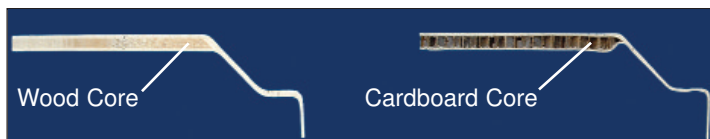
**Low Profiles Series**



**Triangle Dock Box**

**Top Seat Dock Boxes**

### Top Seat Cross Section



The double glass layer and wood core provides more strength in critical areas where hardware is attached. The smooth interior surface has no stray glass fibers that may splinter and become a source for cuts and slivers.



# Taylor Made Mooring Buoys

## Sur Moor T3C Mooring Buoy

This hardshell buoy features a tube through the center with an EPS foam core. Blue stripe around the center is reflective for nighttime mooring. Hardware not included.

Part #	Diameter	Buoyancy
46371	15"	60 lbs.
46372	16"	100 lbs.



## Sur Moor Traditional Mooring Buoy

Sur Moor hard skin mooring buoys have a seamless and tough one-piece polyethylene shell. Hard skin shells have UV inhibitors added to ensure a long life in the sun. Filled with EPS foam for maximum buoyancy.

Part #	Diameter	Buoyancy
22170	12"	30 lbs.
22171	14"	60 lbs.
22172	18"	100 lbs.
22174	24"	240 lbs.

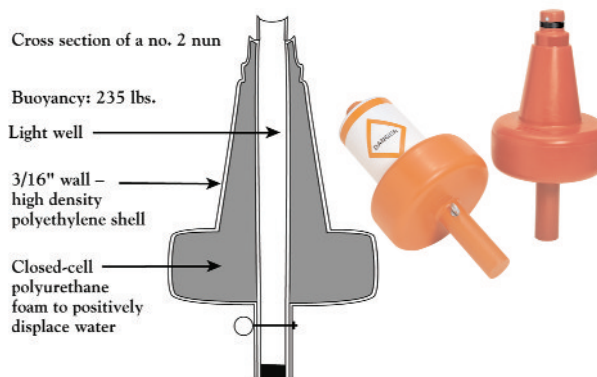
***We stock the entire  
Taylor Made line.  
Call us for  
more details!***



# Regulatory Buoys

Taylor Made navigational buoys meet the most stringent state and municipal requirements. These rotationally molded buoys are used in the harshest environments.

Part #	Description	Overall Height	Max Diameter	Buoyancy
950280	Red Nun	48"	24"	235 lbs.
950290	Green Can	48"	24"	235 lbs.
950300	Danger Can	48"	24"	235 lbs.



# Solar Warning Light

Taylor Made's solar light charges during the daylight hours and automatically turns on at dusk to alert boaters of hazards. Easily attaches to buoys, docks and moorings. The light features 3 modes; always on, slow flash (15 times/minute) and fast flash (60 times/minute). Available in white, red or green LEDs. Made from tough waterproof (not submersible) plastic housing.

Part #	Description
46106	White warning light
46107	Red warning light
46108	Green warning light

**We offer a wide variety of  
marker buoys, mooring buoys,  
and buoy labels.  
Call us for more information!**





## Taylor Made Mooring Whips

### Boatguard Mooring Whips

Boatguard mooring whips have a large diameter solid fiberglass pole that provides the spring action you need to keep your boat safely away from the dock.

Part #	Description	Boat Weight
99079	Boatguard Mooring Whip 8'	Up to 2,500 lbs.
99080	Boatguard Mooring Whip 12'	Up to 5,000 lbs.
99081	Boatguard Mooring Whip 14'	Up to 10,000 lbs.



#### Boatguard Base

- Fresh Water Use
- Low Wake Areas
- Non Tidal Regions

### Standard Mooring Whips

Standard mooring whips are equipped with fixed based angles and are designed for ski boats, runabouts, center consoles, and bass boats. Constructed with solid fiberglass poles, aluminum magnesium base units, roller tips and premium lines. Each kit comes complete with all necessary mounting hardware.

Part #	Description	Boat Weight / Length
MW.080	Fixed Angle Base 8'	Up to 2,500 lbs. / 20'
MW.120	Fixed Angle Base 12'	2,500-5,000 lbs. / 18'-23'
MW.140	Fixed Angle Base 14'	5,000-10,000 lbs. / 24'-28'
MW.160	Fixed Angle Base 16'	10,000-20,000 lbs. / 29'-33'



#### Standard Base

- Fresh or Salt Water Use
- Moderate Wake Areas
- Minimal Tide Regions

### Premium Mooring Whips

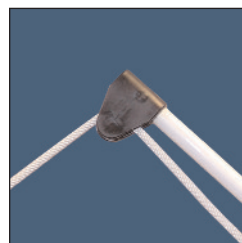
Premium Mooring Whips are equipped with unique rocker arm bases that return the whip poles to the vertical position when not in use. Bases and poles are made for heavier boats and harsher docking conditions.

Part #	Description	Boat Weight / Length
PMW.1400	Premium Rocker Base 14'	Up to 20,000 lbs. / 33'
PMW.1600	Premium Rocker Base 16'	20,000-36,000 lbs. / 34'-46'
PMW.1800	Premium Rocker Base 18'	36,000-48,000 lbs. / 47'-56'



#### Premium Base

- Salt Water Use
- Large Tidal Regions
- Ideal for Large Boats



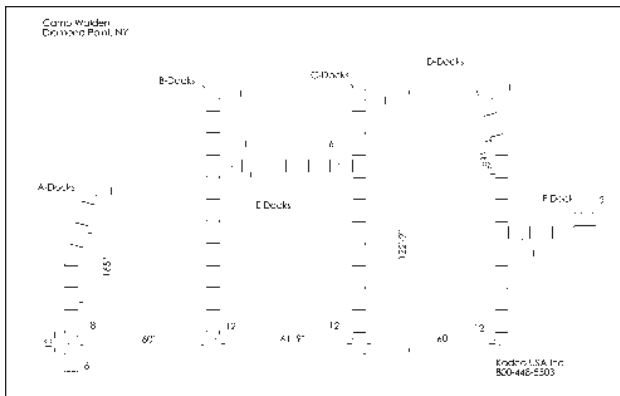
Roller Tips  
Standard on  
All Models



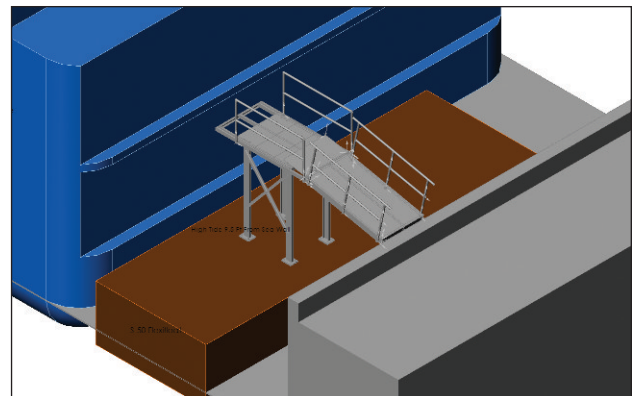
## Projects from Big to Small



Kadco USA designed and manufactured specialized hardware for Lake Sahara Yacht Club's floating club house and docks in Las Vegas, NV.



Summer Camp Site Plans



3D CAD Model for Boarding Gangway



12' x 12' Pond Dock



## ***Our Promise to our Customers***

Kadco USA prides itself on providing the best customer service possible. We make every effort to ship complete items that have no defects in material, workmanship or performance. If you receive an item which is defective or incomplete we will repair or replace the item. Please contact us with any questions regarding returns or exchanges.

## ***Kadco USA Cart Warranty*** Limited 5 Year Warranty

Your "Carry-It" cart has been carefully inspected before shipment and is guaranteed to be free from manufacturing defects for a period of five years. Our five year limited warranty guarantees from the date of sale that we will replace or repair any component that is defective except tires and tubes. Tires and tubes are guaranteed for one year from date of sale. Our warranty does not cover misuse of the product. Information on a specific warranty concern should be addressed to Kadco USA Inc., PO Box 584, Amsterdam, NY 12010. This warranty gives you specific legal rights and you may also have other rights which may vary from state to state.

## ***Other Manufacturer's Warranties***

Warranties for Taylor Made products can be found on their company website [taylormadeproducts.com](http://taylormadeproducts.com). More warranty information on other products we sell, but do not manufacture, can be found in the warranty section of our website [kadcousa.com](http://kadcousa.com).

The Taylor Made name and logo are registered trademarks of the Nelson A. Taylor Company.  
The Perimeter Industries name and logo are registered trademarks of the Nelson A. Taylor Company.

## **Kadco USA Dock Carts Beyond the Marina!**

We've been using the Carry-it for years, but reached a new high last week in the rugged North Cascade Mountains along the border of British Columbia in northern Washington State. We used the cart to haul our supplies a mile up a narrow trail from a lake in the valley below. The handle is well worn but the unit keeps on trucking. Thanks for a quality, versatile, UTILITARIAN product.

Best,  
Rob Lyon

Free-lance Journalist  
Lyon Expeditions,  
Water Marked Press  
San Juan Islands  
Lopez, Washington, USA





## Product Index

Backing Plates	7-8	Floats	12-13
Bolts	8	Gangways	16
Buoys	19	Ladders	17
Carts	4-5	Lights	19
Chain Retainers	9	Mooring Buoys	19
Cleat Supports	9	Mooring Whips	20
Cleats	9	Pile Guides	11
Connecting Hardware	6-8	Piling Hoops	10
Corner Supports	6-7	Piling Caps	9
Decking	17	Pins	8
Dock Boxes	18	Post Bumpers	14
Dock Bumpers	14	Regulatory Buoys	19
Dock Carts	4-5	Roller Hardware	9
Dock Edging	15	Rub Rail	15
Dock Floats	12-13	Solar Lights	19
Dock Hardware	6-9	Swim Float Kit	17
Dock Kits	17	Truss Docks	16
Dock Wheels	14	Work Platform	17
Fasteners	8	Wood Dock Hardware	6-9

Connecting Hardware



Custom Transition Plate



Cleat Hardware



**Check out our website for more products,  
technical drawings and pictures!  
[WWW.KADCOUSA.COM](http://WWW.KADCOUSA.COM)**

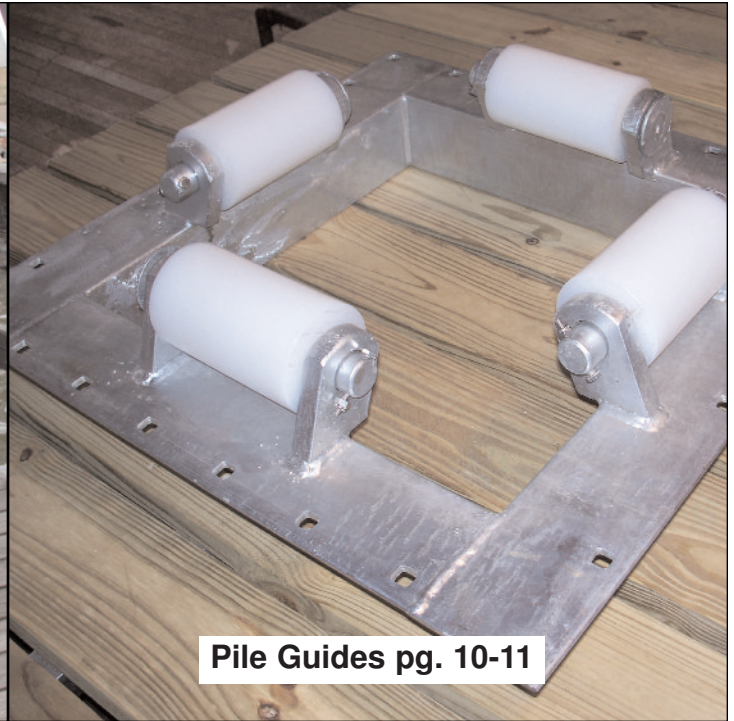


**Ask Us About Rowing Dock Plans & Accessories!**





**Carts pg. 3-4**



**Pile Guides pg. 10-11**



## ***New Warehouse in Seattle, Washington***

**Kadco USA Inc  
PO Box 584  
Amsterdam NY 12010**

**800-448-5503  
Fax: 518-661-5808  
[www.kadcousa.com](http://www.kadcousa.com)  
[info@kadcousa.com](mailto:info@kadcousa.com)**